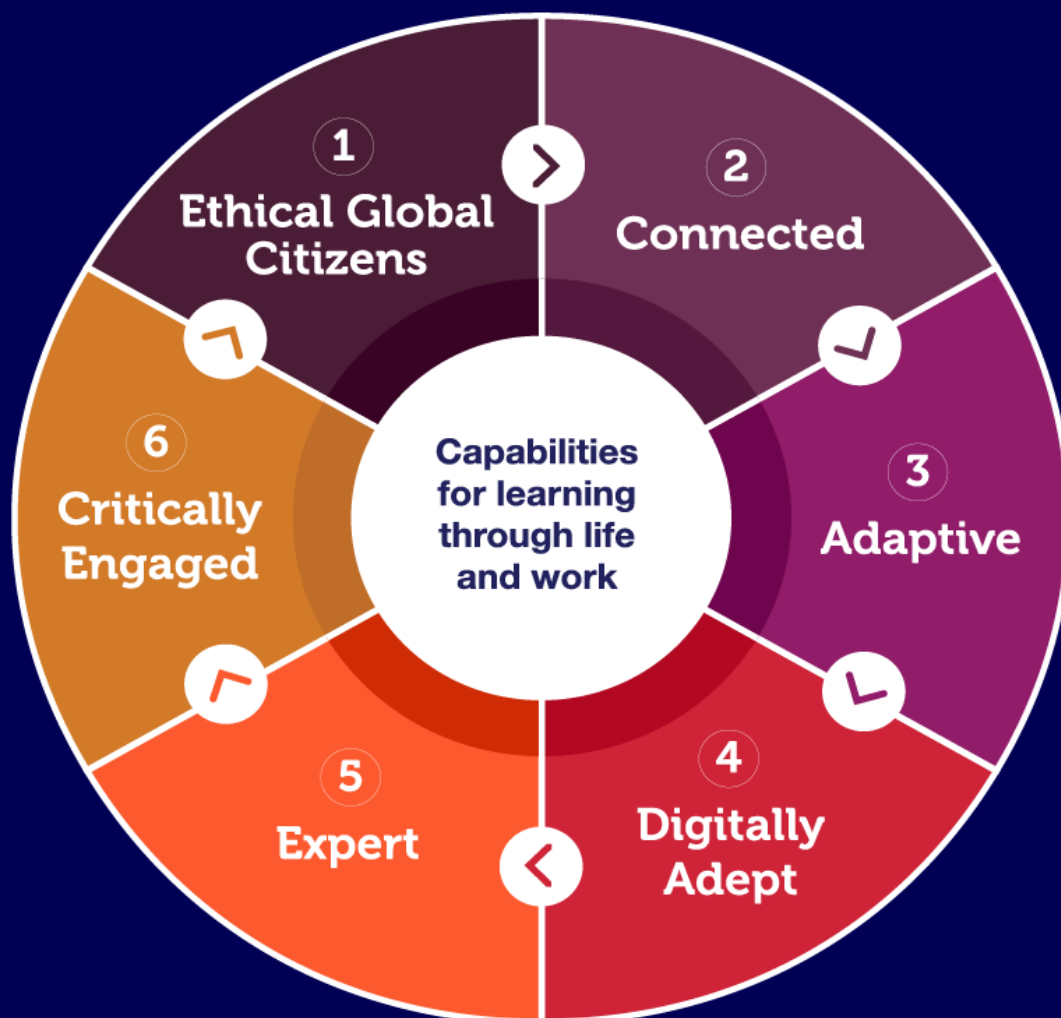


# RMIT Capabilities Student Guide

Helping you maximise your RMIT experiences



# RMIT Capabilities

**RMIT Capabilities describe the skills, knowledge and values that you will develop through your studies.**

At RMIT, you'll develop six unique and future-focused capabilities for learning through life and work. These are called the **RMIT Capabilities**, and they are designed to help prepare you for the evolving nature of work and global engagement.

The capabilities are built into your program and inform the design and delivery of your learning activities and assessments. They also inform some extra-curricular experiences at RMIT.

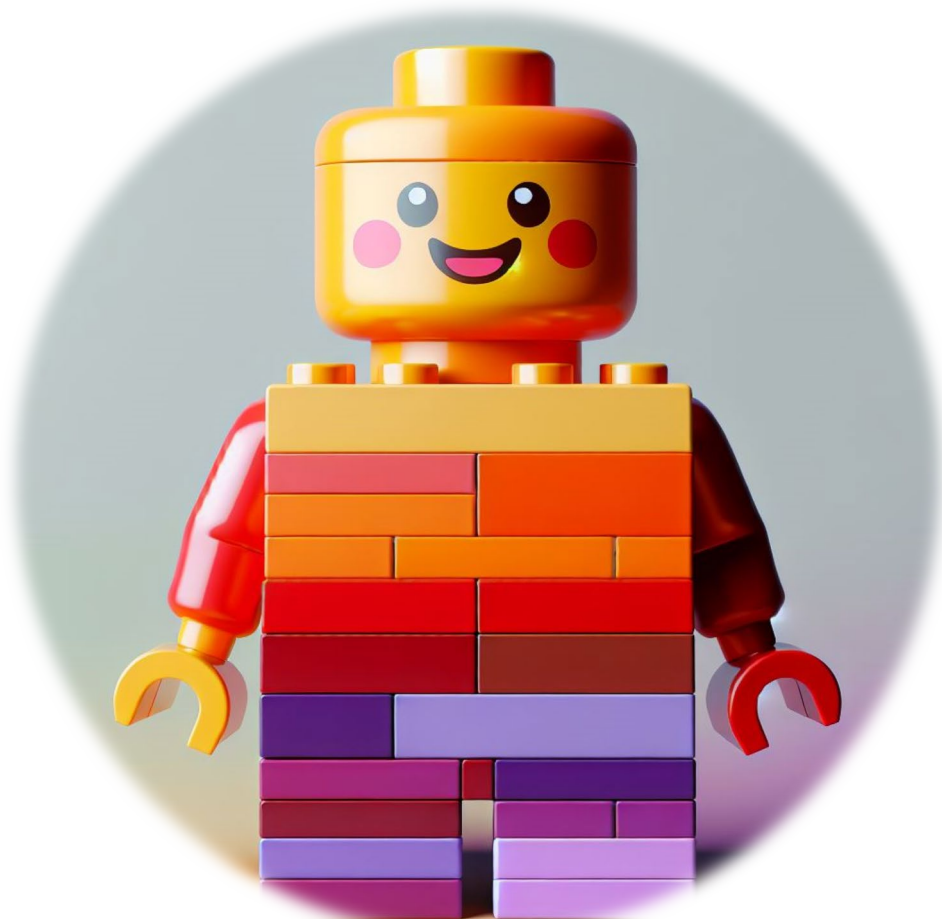
This means, by the time you graduate, you will have developed these capabilities and be ready to apply them in your life and work.



# Introducing the RMIT Capabilities “can do statements”

Each RMIT Capability is divided into sub-capabilities, accompanied by 'Can do statements'.

These statements are practical, action-oriented descriptions designed to help you identify the specific skills and behaviours you are expected to develop within each RMIT Capability.



# 1. Ethical Global Citizen

## “can do statements”

You employ globally inclusive perspectives and a commitment to diversity, inclusion and respect. You actively engage with Aboriginal and Torres Strait Islander peoples’ perspectives, world views and lifeways as important knowledge systems. You contribute to a more sustainable world through engagement with the Sustainability Development Goals.

Sub-Capability	Can do statement
1A Diversity	Can embrace diversity and inclusivity, leading respectful and equitable interactions and exchanges.
1B Aboriginal and Torres Strait Islander Knowledge System	Can respect and integrate Aboriginal and Torres Strait Islander knowledge.
1C Inclusion	Can advocate for inclusion and equity, dismantling inequality structures.
1D Global Perspectives	Can apply globally inclusive perspectives, integrating diversity in decision making.
1E Sustainable	Can design and evaluate sustainable practices, influencing decision-making.
1F Sustainability Development Goals	Can use the <a href="#">United Nation’s Sustainable Development Goals</a> to guide decisions and actions for global well-being.

## 2. Connected “can do statements”

You actively establish meaningful connections with professional, peer, government, industry and/or community networks. You collaborate with diverse, multidisciplinary and cross-functional teams to solve complex problems

Sub-Capability	Can do statement
2A Meaningful Connections	Can build and maintain a network of meaningful connections for learning and growth.
2B Collaborate	Can collaborate effectively, developing shared goals and mutual respect.
2C Multidisciplinary & Cross-Functional Teamwork	Can lead and join diverse cross-functional teams for innovative problem-solving.

## 3. Adaptive “can do statements”

You employ intellectual agility, knowledge and skills to develop solutions in a fast-changing world. You utilise self-awareness to reflect on learning and experiences to build transferable skills and grow personally and professionally.

Sub-Capability	Can do statement
3A Intellectual Agility	Can analyse real-world scenarios, identify information, and propose solutions using critical thinking.
3B Transferable Skills	Can synthesise transferable skills, evaluate utility, and establish adaptability across contexts.
3C Grow Professionally	Can create growth plans aligning skills, experiences, and opportunities with career goals.
3D Self-awareness	Can assess behaviors, refine actions, and improve based on self-awareness and core values.
3E Grow Personally	Can reflect on growth, appraise development, and plan strategies for personal improvement.

## 4. Digitally Adept “can do statements”

You create and utilise a blend of digital and human skills, tools and emerging technologies to learn, solve problems, innovate, communicate and collaborate.

Sub-Capability	Can do statement
4A Digital Skills	Can evaluate and use digital functions proficiently across devices, applications, and networks.
4B Emerging technologies	Can analyse and integrate current technologies, foresee impacts, and ideate opportunities.
4C Innovate	Can apply critical analysis of technology and society to lead innovative projects solving real-world problems.
4D Human skills	Can adapt human skills, integrate with digital skills, and influence for positive outcomes.
4E Digital Communication	Can critically assess and adapt digital communication strategies to effectively share information across platforms.

## 5. Expert “can do statements”

You establish and continue to grow and apply disciplinary and/or interdisciplinary knowledge and expertise in real life contexts and as a life-long learner.

Sub-Capability	Can do statement
<b>5A Disciplinary</b>	Can synthesise disciplinary knowledge, contribute novel ideas, and engage in lifelong learning.
<b>5B Interdisciplinary</b>	Can integrate knowledge from multiple disciplines to develop innovative solutions for complex problems.
<b>5C Expertise in real-life contexts</b>	Can critique theories, generate new knowledge, and transfer learning to others.
<b>5D Life-long learner</b>	Can reflect, adjust learning strategies, and prioritise opportunities for continuous growth.



## 6. Critically Engaged “can do statements”

You employ intellectual independence and judgement to engage critically with information, make sound evidence-based decisions, actively challenge assumptions, and undertake research.

Sub-Capability	Can do statement
<b>6A Intellectual independence</b>	Can guide peers in rational decision-making using knowledge, skills, and research.
<b>6B Engage critically</b>	Can critically engage with complex information, manage bias, and promote constructive discussion in professional contexts.
<b>6C Use judgment and challenge assumptions</b>	Can critically challenge assumptions, adapt analytical methods, and make sound judgments based on evidence.
<b>6D Undertake research</b>	Can independently undertake research, create new knowledge, and contribute to innovation.

# Acknowledgements

- Artwork on pages 2 and 10 is ‘Sentient’ by Hollie Johnson Hollie is a Gunaikurnai and Monero Ngarigo woman from Gippsland who graduated from RMIT with a BA in Photography in 2016.
- Page 3 image generated using Microsoft Copilot using prompt A happy Lego character made of stackable blocks that are the colours of: “gold”, “orange”, “red”, “boysenberry”, “light purple” and “dark purple”.
- RMIT’s Val was used for editorial support and idea generation in creating this resource.

